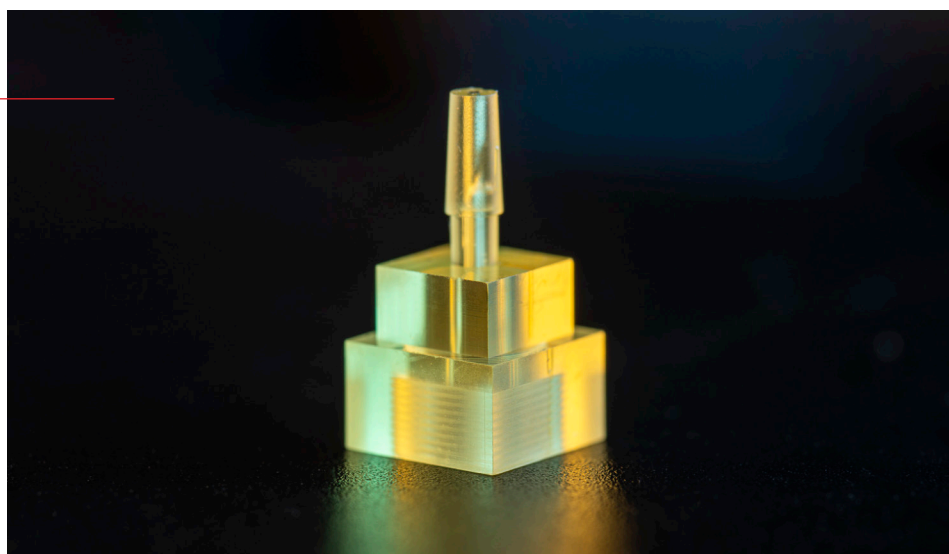


# ST1400 Resin

ST1400 offers high toughness and elongation for applications requiring high flexibility such as snap-fits.



		Cured Parts	Standard
Tensile Properties	TENSILE STRENGTH	45 MPa	ASTM D638
	ELASTIC MODULUS	1900 MPa	ASTM D638
	ELONGATION AT BREAK	43%	ASTM D638
	ELONGATION AT YIELD	5.5%	-
Thermal Properties	CTE @ 60C	111 $\mu\text{m}/\text{m}/^{\circ}\text{C}$	-
	HDT @ 0.45MPa	57°C	-
	CONTACT ANGLE	30°-60°	ASTM D7334
General Properties	WATER ABSORPTION (24h)	0.33%	ASTM D570
	DIELECTRIC CONSTANT (10 GHz)	3.1	-
	HARDNESS	78 Shore D	ASTM D785
	VISCOSITY	280 cP	-
	STANDARD COLOR	Yellow trans	-
	COMPATIBLE BMF SYSTEMS	S350, S140, S240	-

<sup>1</sup> Final properties are dependent on print conditions, post-processing operations, and part geometry.

<sup>2</sup> Test samples were UV cured and heat cured.